



The Invasive Spotted Lanternfly

Excerpt from article by Surendra Dars

The Spotted Lanternfly is an invasive planthopper that is native to China, India and Vietnam and has spread to New Jersey, Delaware, Maryland, Virginia and West Virginia. The Spotted Lanternfly preferred host is the Tree of Heaven (*Allanthus*) that borders vast sections of Rt. 78.

In local backyards, Red and Silver Maples, River Birch, Black Walnut and Butternut are all impacted. Also, roses, grapes, and sumac can be attacked. In addition to this damage, the Spotted Lanternfly excretes a sugary substance that encourages the growth of black sooty mold, which is not harmful to people but can damage plants further.

The Spotted Lanternfly has one cycle per year, consisting of four nymphal stages (May – September), an adult stage (July – December), egg laying (September to December) and the egg masses overwintering (October to June). They are true bugs and molt to progress between stages.

Citizens are advised to destroy the Spotted Lanternfly in all its forms. The Pennsylvania and New Jersey Departments of Agriculture have detailed information on the different Spotted Lanternfly forms and the most effective ways to destroy them. If you are considering glue traps, please read information on how to make the traps safe for birds.

Some strategies for getting rid of the Spotted Lanternfly include: squash adults, use sticky tape to interfere with the movement of the bugs up the tree, and remove egg masses where sighted.

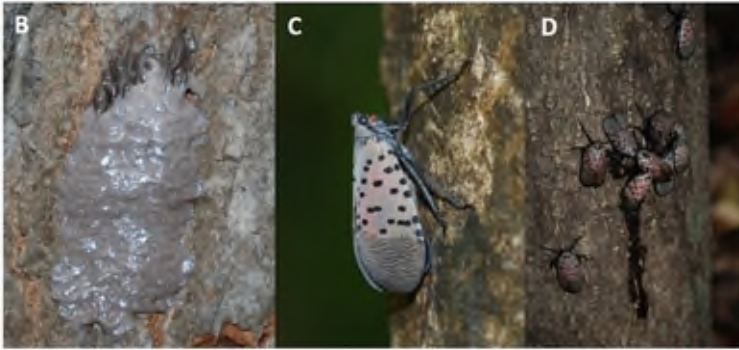


Photo courtesy: Lawrence Barringer,
Pennsylvania Department of Agriculture

- A. 1st-4th instar nymphs and adult female with wings spreadout
- B. Egg masses in oothecae (egg cases) covered in a waxy deposit
- C. Lateral view of a resting adult
- D. Adult congregation on a tree trunk and plant sap oozing from damaged area

References:

Author: Surendra Dars

<https://ucanr.edu/blogs/blogcore/postdetail.cfm?postnum=26349>

NJ Agriculture Department

<https://www.nj.gov/agriculture/divisions/pi/prog/SpottedLanternfly.html>

PA Agriculture Department

https://www.agriculture.pa.gov/Plants_Land_Water/PlantIndustry/Entomology/Spotted_Lanternfly/SpottedLanternflyAlert/Pages/default.aspx